



## Year Group News

**Foundation Stage** In Reception next week, we will continue on our wintry journey and will explore further the world of Jack Frost. The children will be using tools and fine motor control to ice biscuits and give them a sprinkling of silver. They will name and select a range of 2D shapes in order to create a picture of a snowman. We will discuss properties of these shapes as we work. The excitement mounts as our Christmas performance draws ever closer! Be prepared for lots of songs being shared with you at home! Thank you as always for taking time to read and write with your child at home, as well as exploring the world through our 'Foundation Five'. The children so love to share their impressive efforts from home with their peers.

**Year 1** Next week, Year 1 are looking forward to performing their Christmas show - 'Mince Pie Sing-a-Long'. Children will be dressed up and ready to sing their hearts out to kick start the festive season. Parents are welcome to arrive from 9.10 to enjoy some mince pies and teas. The show will start at 9.30am in the Main Hall. In English, children will be continuing their letter writing and they will be sending thank you letters to the PTA. The children will be putting the finishing touches to their dinosaur worlds and will be using clay to make a dinosaur.

**Year 2** Year 2 will be continuing their History and Science learning by looking at and discussing what actually happened to the dinosaurs all those many years ago. We will be exploring many different theories of how and why the dinosaurs became extinct based on scientific evidence and inquiry. We will be starting a second week reading our class text, Dinosaur Farm, using our inference skills to explain what jobs the dinosaurs may want the farmer to carry out to make their life even better! Next week, we will be starting our new writing block, which is to learn how to write newspaper reports, using our knowledge of dinosaurs and facts learned about Mary Anning in order to do so. In Maths, we will be learning about Statistics, interpreting itally charts, blockgrams and data from pictograms. Next week will find us in full rehearsal swing for our Christmas production *Children Around the World*. We hope that your child is practising their lines and singing the songs daily!

**Year 3** Next week, Year 3 children will be writing a non-chronological report about their own dragon. In Maths, the children will be continuing to look at multiplication and division with a focus on the 4 and 8 times tables. They will also begin to work on their focus times table - please take the time to discuss this with your child and practice where you can. We are looking forward to seeing you all at the Christmas Tree lighting on Monday - we have been practising our songs and words this week for the start of Christmas at Goosewell.

**Year 4** Thank you to those of you who joined us for 4G's family assembly, and for those of you who attended the London meeting. If you were unable to attend, the PowerPoint presentation is available on the school website via this link

[London 2020](#). Next week in Maths, we will be learning and applying our times tables knowledge; any help with practising these at home will be invaluable. In English, we will be studying biographies further and looking at the lives of famous musicians. For our Playlist topic, we will be exploring how to insulate sounds for soundproofing, as well as warming up our vocal chords to explore songs from around the world with great links to our djembe lessons!

**Year 5** This week, we have started to read another story by Oliver Jeffers, called 'The Way Back Home'. We are going to be making comparisons between this story and 'How to Catch a Star' and we have already noticed many similarities! The story involves a character, who gets stuck on the moon and the children had some imaginative predictions about how he could get back to Earth. In Maths, we have been multiplying and dividing by 10, 100 and 1000. Linked to our Stargazers topic, we have created moonscapes, using collage materials, and we have investigated gravity following our own lines of enquiry. The children enjoyed having permission to stand on a table to carry out their investigations!

**Year 6** Year 6 will be writing their non-chronological reports next week based on their chosen polar animal. They will apply all the knowledge of the features they have developed this year to produce their final written outcome. In Maths, the children will continue their learning linked to fractions. They will develop their understanding of how to find fractions of an amount. In topic, the children will learn about the history and development of polar exploration. They will use the internet and non-fiction books to find information and images related to polar explorers and their expeditions.

Next week's virtue is.....

**Reliability**

The quality or state of being reliable.



## Election Fever hits Goosewell!

Over the next couple of weeks, Goosewell children will be able to vote for their favourite political party. Our Year 6 children will be representing each of the major political parties, canvassing and campaigning to the rest of the school who will then cast their votes at the polling booths in our mock election. Votes will be counted overnight (!) and the results will be published on Wednesday 11th December when we will have an indicative idea of what our future generation's voting preferences will be!



## Parent Support Adviser News from Jo Penk

Don't forget to look at the PSA section of the Goosewell Academy website, for information on clubs, support and activities for families throughout the year. You can find further details by clicking here [PSA](#)

### Calling all service families!

We are always keen to find out if we are supporting our service families well.

If you are a service family, we invite you to complete this short, online survey to tell us how we are doing.

[Service Families Survey](#)

Thank you in advance!



## Penguins: A LEGO® brick trail

The penguins are back, spreading their Christmas magic over Plymouth!

Join in the festive family fun trail and seek out all 20 life size LEGO brick penguins which will be hidden in shops and businesses around Plymouth's city centre.

Start your adventure to find the names of all 19 Rockhoppers and one special Emperor Penguin. You could win fantastic prizes, including a weekend family trip to LEGOLAND® Windsor Resort, courtesy of Plymouth Citycoach, or a Penguin Feeding Experience at Living Coasts for four people! Either download the trail map and enter online at: [www.visitplymouth.co.uk/plymouth-penguins](http://www.visitplymouth.co.uk/plymouth-penguins) or pick up a trail card from participating businesses, libraries or the Tourist Information Centre on the Barbican. The full list and all the details are on the website.

Use the trail map to help you find where the penguins are hiding, then complete the entry form with all 20 penguin names. The trail runs from 30 November 2019 to 5 January 2020. Send in your completed entry form by Wednesday 15 January 2020.

This family-fun trail is a great way to combine a bit of Christmas shopping, or enjoy some seasonal treats, whilst entertaining the children with a walk and some festive fun activities. For more information search for #PlymouthPenguins or [www.visitplymouth.co.uk/plymouth-penguins](http://www.visitplymouth.co.uk/plymouth-penguins)

Happy searching!

**USING EVERYONE'S TALENTS**

## Christmas Countdown Calendar

<b>Mon 2nd December</b> <b>5.00pm Year 3/Year 4</b> Christmas Tree Lighting Celebration (All welcome)	<b>Tues 3rd December</b>	<b>Wed 4th December</b> <b>9.30-10.30am Year 1</b> Mince Pie Sing-a-Long In the main hall (for parents/carers)	<b>Thurs 5th December</b>	<b>Fri 6th December</b> <b>9.30-10.30am Jack 'n' Jills</b> Nativity in the Main Hall
<b>Mon 9th December</b>	<b>Tues 10th December</b>	<b>Wed 11th December</b> <b>9.30-10.30am Reception</b> Nativity in the main hall (for parents/carers)  <b>2.00pm Year 2</b> Christmas Around the World performance  <b>5.00pm Year 2</b> Christmas Around the World performance	<b>Thurs 12th December</b> <b>Reception &amp; Key Stage 1</b> Christmas Party	<b>Fri 13th December</b> <b>Christmas Jumper Day</b> in support of Little Harbour & Children's Hospice South West
<b>Mon 16th December</b> <b>Year 3 &amp; Year 4</b> Christmas Party	<b>Tues 17th December</b> <b>2.00-3.00pm Year 5 &amp; Year 6</b> Carol Service at Plymstock Church  <b>6.00-7.00pm Year 5 &amp; Year 6</b> Carol Service at Plymstock Church	<b>Wed 18th December</b> <b>Year 5</b> Christmas Party	<b>Thurs 19th December</b> <b>Christmas Dinner</b>  <b>Year 6</b> Christmas Party	<b>Fri 20th December</b> <b>Whole school (free) mufti for end of term</b>

## Royal British Legion Poppy Appeal

Thank you to all supported this year's Poppy Appeal and for raising such a great amount for the Royal British Legion.



**POPPY APPEAL**

Thank you very much for helping with our Appeal.

£ 284.77 was collected by you.

Without your help, we would be unable to continue our vital welfare and benevolent work.

Yours sincerely  
  
 Local Honorary Organiser

District Total (if available) £ 8939.26  
 Registered Charity No. 219279

## Pupil Successes

Well done to Sienna in 4L for achieving her British Gymnastics level 9 trampoline proficiency award this week.



Well done too to Charlotte 4G for being awarded a Merit in her IDTA Modern Jazz Preparatory Grade.

**USING EVERYONE'S TALENTS**

## Attendance

### Weekly attendance celebrated

We have continued to celebrate the classes with the highest attendance rates each week and these are highlighted in red in the table below.

So far in term 2 5S have achieved the best class average (98%) for the whole term. Will your class be able to get a higher average before Christmas?

Keep up the great attendance as your learning will grow if your attendance is good.

Class	Term 1	Term 2			
	14 <sup>th</sup> – 18 <sup>th</sup> Oct	28 <sup>th</sup> Oct – 1 <sup>st</sup> Nov	4 <sup>th</sup> – 8 <sup>th</sup> Nov	11 <sup>th</sup> – 15 <sup>th</sup> Nov	18 <sup>th</sup> – 22 <sup>nd</sup> Nov
RBH	92.8%	94.8%	93.1%	94.2%	96.2%
REH	93.3%	93.8%	96.7%	91.5%	86.3%
1/2KH	95.5%	98.5%	98.8%	98.4%	94.4%
1B	95.4%	96.0%	93.0%	95.2%	93.7%
1WH	96.3%	92.3%	93.8%	98.5%	90.0%
2N	94.4%	92.3%	94.1%	99.3%	84.4%
2NB	99.0%	94.5%	92.8%	96.8%	91.2%
3M	93.0%	94.9%	99.6%	97.1%	95.4%
3MH	98.9%	94.5%	97.3%	94.5%	98.6%
3Y	96.9%	90.5%	96.5%	98.7%	88.7%
4DH	96.8%	94.1%	95.5%	97.4%	97.1%
4G	92.1%	91.2%	96.7%	98.0%	94.7%
4L	94.6%	96.4%	98.0%	98.3%	95.3%
5C	96.4%	95.6%	91.0%	93.8%	95.5%
5S	98.7%	98.1%	98.6%	97.6%	97.9%
5T	99.0%	99.3%	98.0%	97.6%	93.6%
6R	95.6%	93.3%	97.4%	99.7%	96.5%
6S	89.5%	95.2%	88.3%	97.0%	89.7%
6WT	95.8%	97.9%	96.3%	96.6%	99.3%



GOOSEWELL PRIMARY — TUESDAY'S 3.30PM — 4.30PM — BOOK BY FRIDAY 6<sup>TH</sup> DECEMBER



create  
club



### EXPLORE, DISCOVER AND DEVELOP

Enjoy a fun, award winning, arts and crafts after school club and get creative with friends.

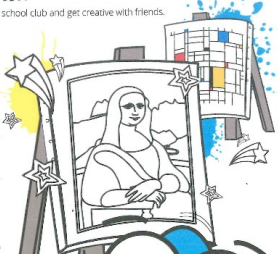
✦ Exploring the creative effect of Banksy...

✦ Discover Paul Klee expressionism...

✦ Mixed media creations inspired by Faith Ringgold...

✦ and learning silhouettes styles by Kara Walker

...to name a few of the awesome art inspired Create Club fun activities your child will enjoy



AWESOME  
ARTISTS

Book by:  
<https://www.thecreationstation.co.uk/a-club/club-5-11-years-tuesday1530-plymouth-and-plymstock/2020-01-14>

As seen on:

ITV sky

All our clubs are run by trained and qualified staff.

TRUSTPLOT



A big

THANK  
YOU



GOOSEWELL ACADEMY

For the 80.02kgs of food collected at Harvest.  
It will make a BIG difference to local people in crisis.

Plymouth Foodbank is part of the Trussell Trust's UK wide foodbank network.



Registered Charity Number: 1129521 | Registered in England and Wales.

Plymouth Foodbank is always grateful for donations from the general public and in particular the following items. There are donation points at local supermarkets if you feel able to help.



#### Shopping List

Tinned Fish  
Sugar  
Tinned Rice Pudding  
Biscuits  
Long-life Fruit Juice  
Tinned Fruit  
Long-life Milk  
Tinned Meat  
Packet Mashed Potato  
Tinned Tomatoes

Plymouth Foodbank is a part of Plymouth Methodist Mission Church  
Registered Charity No. 1129521  
For more information visit [www.plymouthfoodbank.org.uk](http://www.plymouthfoodbank.org.uk)



**Dates for your diaries - all future activities, meetings and assemblies can be found here on the [school website calendar](#)**

### NOVEMBER

#### Friday 29th

SPaG (Spelling, Punctuation and Grammar) Workshop for Parents/Carers with Mrs Clarke 9-9.45am

### DECEMBER

#### Monday 2nd

Christmas Tree lighting celebration on Reception playground 5-5.45pm

#### Wednesday 4th

Year 1 Mince Pie Sing-a-Long for parents/carers 9.30-10.30am

#### Friday 6th

Jack'n Jills Nativity in the Main Hall 9.30-10.30am

#### Wednesday 11th

Reception Nativity for families in the Main Hall 9.30am

Year 2 Christmas Around the World Performance in the Main Hall 2.00pm

Year 2 Christmas Around the World Performance in the Main Hall 5.00pm

#### Thursday 12th

Reception and KS1 Christmas Party

#### Friday 13th

Christmas Jumper Day for Little Harbour and Children's Hospice South West

### Future dates:

Friday 20th December

Monday 23rd December — Friday 3rd January

Monday 6th January & Tuesday 7th January

Wednesday 8th January

Friday 14th February

Monday 17th February — Friday 21st February

Monday 24th February

Last day of Term 2

Christmas break

Non Pupil Days

First day of Term 3

Last day of Term 3

Term break

First day of Term 4

**USING EVERYONE'S TALENTS**